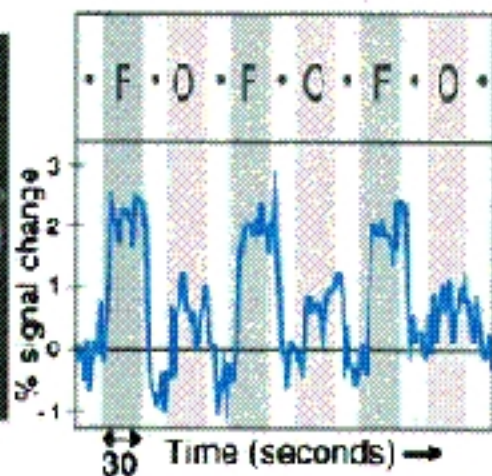
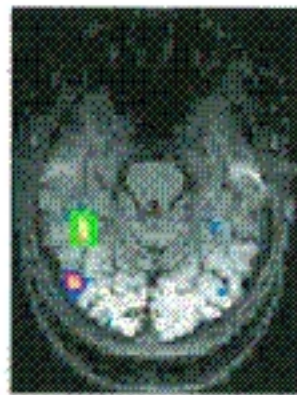
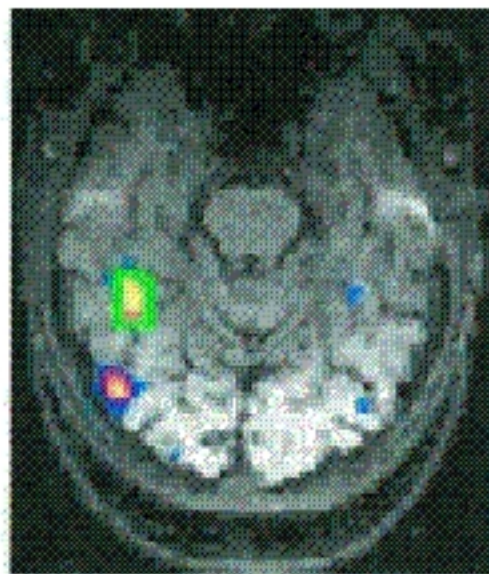


### 3a. Faces > Objects



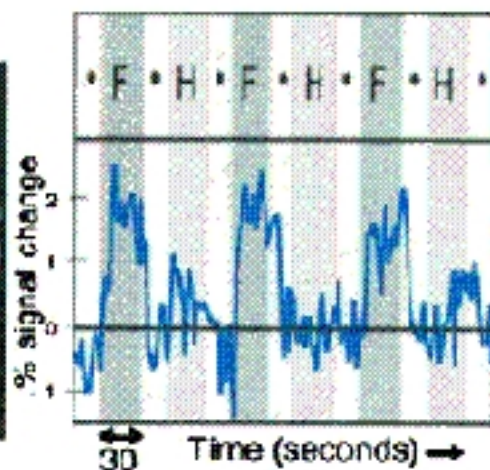
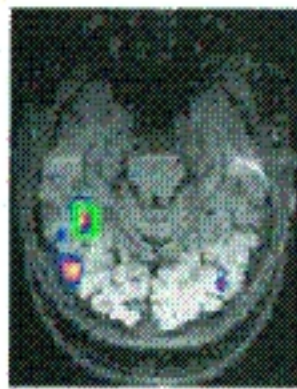
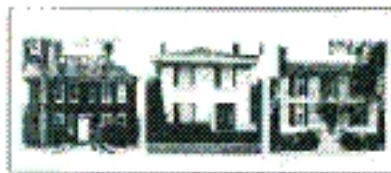
*right hemisphere*



*left hemisphere*



### 3c. Faces > Houses



**The Fusiform Face Area:  
A Module in Human Extrastriate Cortex  
Specialized for Face Perception**

Nancy Kanwisher, Josh McDermott, and Marvin M. Chun  
*The Journal of Neuroscience*, June 1, 1997, 17(11):4302-4311