

Figure 11.5 Frequency spectrum of a flute playing a tone with a fundamental frequency of 1,568 Hz. (Olson, 1967)

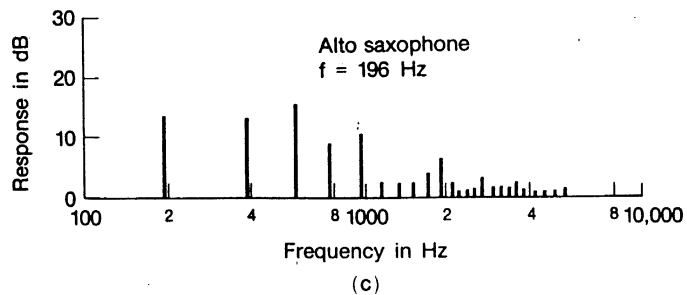
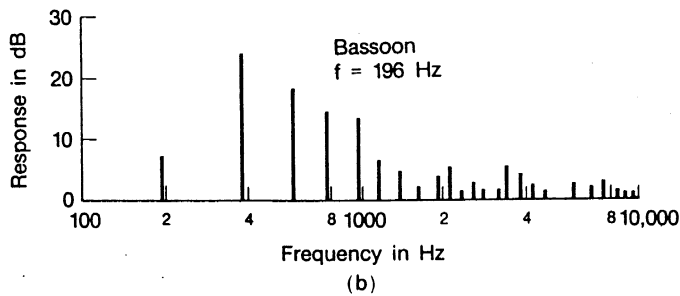
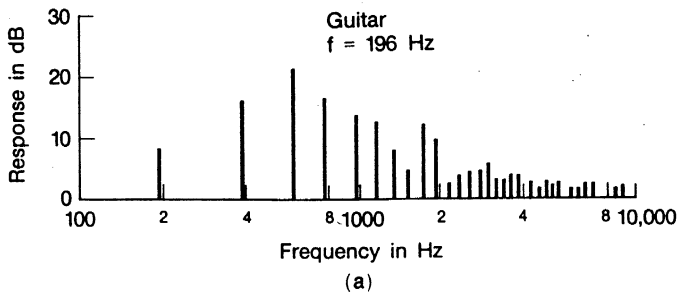


Figure 11.4 Frequency spectra for a guitar, a bassoon, and an alto saxophone playing a tone with a fundamental frequency of 196 Hz. (Olson, 1967)

from: Sensation and Perception (1980), by E. B. Goldstein,
Wadsworth (Belmont) pp 367-368.